

Intelligent network  
scanning in a compact,  
stylish design

**ScanFront 330**  
Network Document Scanner

you can







imageFORMULA

**Canon**



## The compact, stylish and user-friendly scanner that connects directly to your network

	 B&W SPEED	 COLOUR SPEED	 DAILY DUTY CYCLE	 AUTOMATIC DOCUMENT FEEDER
<b>ScanFront 330</b>	30ppm	25ppm	3,000 scans/day	50 sheets

A4 portrait speed

Accelerate document processing with the imageFORMULA ScanFront 330 Network Scanner. Achieve fast, reliable scanning that seamlessly integrates with your business applications and workflows.

### Stylish, compact design

With its ultra-compact sleek design, and no need for any additional hardware or software, the ScanFront 330 Network Scanner takes up very little desk space. So it's ideal for busy office departments, or for positioning a document capture device in customer facing environments, such as branch offices or retail service points.

### Productive, reliable scanning

The compact ScanFront 330 helps streamline workflows and reduce costs with productive scanning speeds of up to 60 images per minute. With a robust feeder/separation roller mechanism and a straight-through paper path design, users can confidently scan mixed document types smoothly and reliably. Capture documents from ultra-thin to thick ID cards, large documents of up to 1m in length, and even A3 documents using the Folio Mode feature. An ultrasonic double feed detection sensor instantly detects any misfeeds which ensures that all documents are captured.

### Powerful image processing for high quality results

With the ScanFront 330's advanced image processing features, you can achieve results that have consistently high image quality, and which are optimised for further data recognition processing. The Advance Text Enhance mode achieves clearer, more legible images from documents that have very light text or writing. Other features such as Auto Page Size Detection, Auto Colour Detection, Text Orientation and Skip Blank Page, all help to save additional time and deliver superior image quality, scan after scan.

### Intuitive, versatile and personalised operation

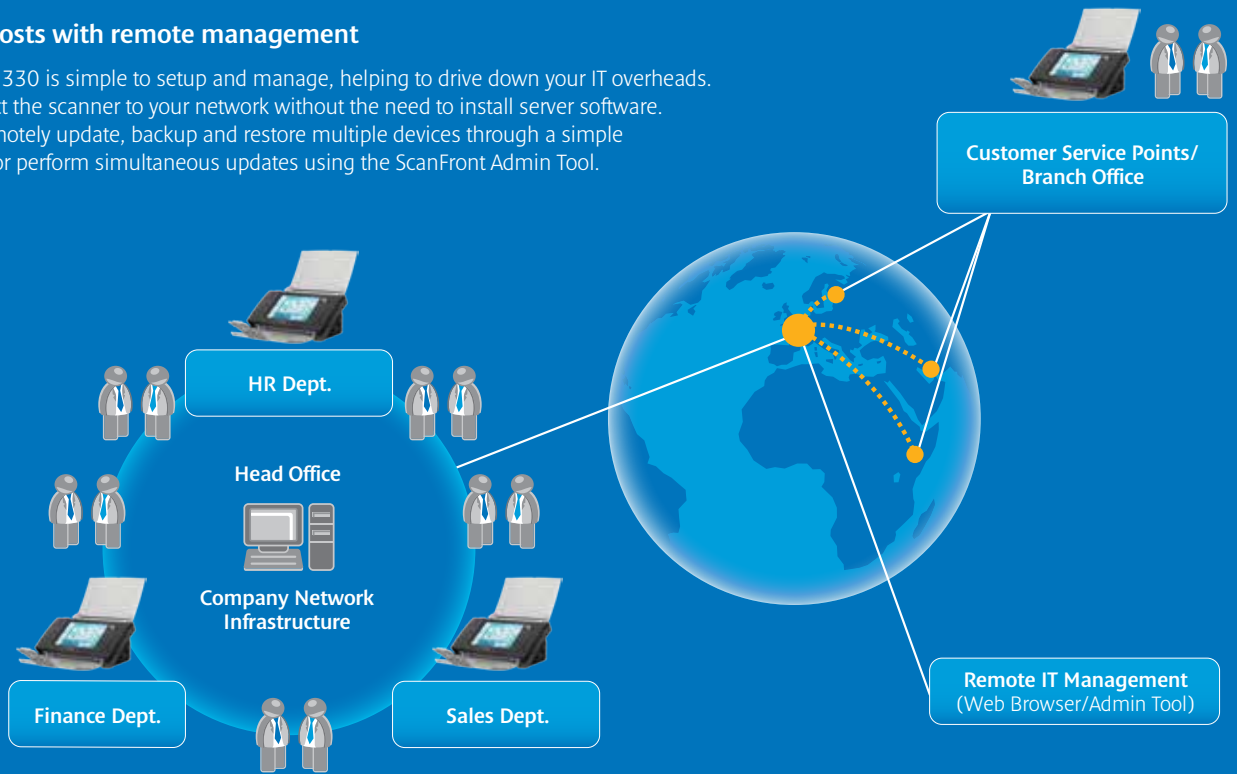
With the ScanFront 330, scanning has never been easier. The large colour touch screen is naturally intuitive, while personalised user job buttons enable simple 'one touch' scanning and accurate image processing to destinations such as email, network folder, FTP, USB, fax and print. Convenient time-saving features include sending to multiple destinations at once, an email-me function for users to send documents quickly to their own email address, and an ad-hoc fax capability that lets users enter a fax number at the time of the scan.



Intuitive colour touch screen with versatile scanning options

## Reduce IT costs with remote management

The ScanFront 330 is simple to setup and manage, helping to drive down your IT overheads. Simply connect the scanner to your network without the need to install server software. It's easy to remotely update, backup and restore multiple devices through a simple web browser or perform simultaneous updates using the ScanFront Admin Tool.



## Advanced security features to protect your work

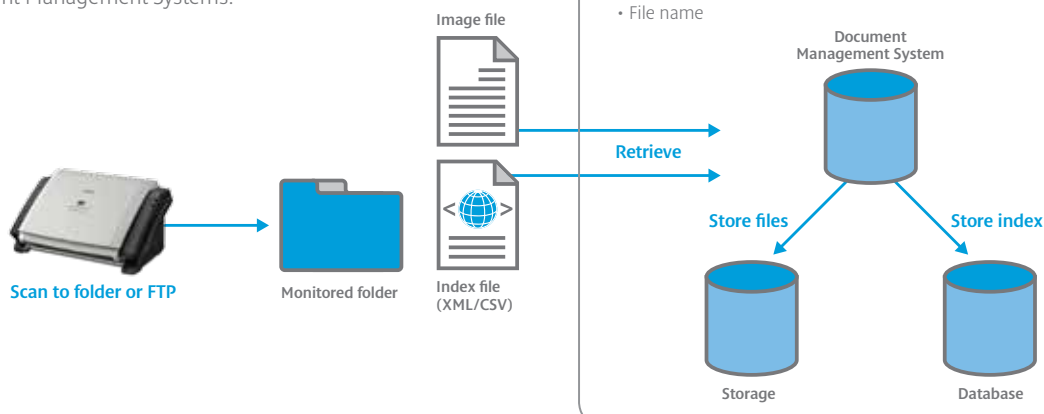
The ScanFront 330's robust security features give users full control over accessing, managing and distributing information:

- **Device security:** only authorised users can access the device, using ID and password authentication, which can be controlled using your active directory login or LDAP directory. An automatic logout gives additional protection against access to the device by unauthorised users
- **User security:** user permissions can be set individually, ensuring that users can only access the appropriate or necessary scanning options and features
- **Document security:** scanned documents, such as confidential files, can be sent with PDF encryption and password protection, so you can control access for viewing, editing and printing.

Other security features include support for LDAP over SSL communication (LDAPS), and audit trail logging so administrators can easily monitor all scanner activity via the network.

## Seamless integration and customisation

With the ScanFront 330, you can transfer important metadata information (CSV/XML format) that supports data integration into Document Management Systems.



Software Developer Kits (SDK) are also available to software developers for customising or integrating their solutions directly on the Canon device. The web-based SDK enables developers to switch the ScanFront to run in a Web Application Mode and to create integrated solutions that run off a separate web server.

For more information on SDKs please go to [www.canon-europe.com/bsdp](http://www.canon-europe.com/bsdp)

## Environmentally friendly and designed to reduce costs

The ScanFront 330 is extremely energy-efficient. As a standalone device, it does not require an additional PC or monitor in order to perform, while central administration means service issues can be addressed remotely, reducing the requirement for engineers to make costly site visits.

# Specification: imageFORMULA ScanFront 330

Type	Sheetfed Type Network Scanner	
Document Reading Sensor	CMOS CIS 1 Line Sensor	
Optical Resolution	600dpi	
Light Source	RGB LED	
Reading Side	Simplex / Duplex	
Interface	LAN 10Base-T / 100Base-TX Connector USB 2.0 x 4 for USB Memory, USB Keyboard, USB Mouse	
Operation Panel	8.4" (800 x 600) TFT LCD with Touch Panel	
Dimensions	Tray Closed: 310 (W) x 161 (D) x 215mm (H) Tray Open: 310 (W) x 297 (D) x 565mm (H)	
Weight	Approx. 3.6kg	
Power Requirements	AC100 - 240V (50/60Hz)	
Power Consumption	Scanning 30W or less, Low Power Mode 1W or less, Power OFF: 0.5W or less	
Operating Environment	10 - 32.5°C (50 - 90.5°F), Humidity: 20 - 80% RH	
Environmental Compliance	RoHS and ENERGY STAR®	
<b>READING SPEED*</b> (200dpi A4, Portrait)		
B&W	30ppm / 60ipm	
Greyscale	30ppm / 60ipm	
Colour	25ppm / 40ipm	
<b>DOCUMENT SPECIFICATIONS</b>		
Width	50.8 - 216mm	
Length	53.9 - 355.6mm	
Thickness		
	Automatic Feeding	52 - 209g/m <sup>2</sup> (0.06 - 0.25mm)
	Manual Feeding	40 - 209g/m <sup>2</sup> (0.05 - 0.25mm)
Card Size and Thickness	Size: 53.9 x 85.5mm Thickness: no more than 300g/m <sup>2</sup> (0.76mm) (Cards with embossed letters are supported)	
Long Document Mode	1000mm Max	
Paper Separation	Retard Roller Method	
Feeder Capacity	50 sheets (80g/m <sup>2</sup> )	

<b>OUTPUT</b>	
Optical Resolution	100 x 100dpi, 150 x 150dpi, 200 x 200dpi, 300 x 300dpi, 400 x 400dpi, 600 x 600dpi
Mode	Black and White, Error Diffusion, Advanced Text Enhancement II, 256-Level Greyscale (8-bit), 24-bit Colour, Auto Colour Detection
<b>SPECIAL FEATURES</b>	Email-Me, Ad-Hoc Fax, Deskew, Auto Page Size Detection, Ultrasonic Double Feed Detection, Skip Blank Page, Text Orientation Recognition, Image Rotation, Colour Dropout (RGB), Prevent Bleed Through / Remove Background, Folio Scanning, Customised File Naming, Customised Index File Creation
<b>FUNCTIONS</b>	
Scan to Folder	Supported Protocol: SMB
Scan to Email	Supported Protocol: SMTP SMTP Authentication: Supported
Scan to FTP	Server Supported: MS Exchange Server, Sendmail, Postfix, Lotus Domino Server Supported Protocol: FTP Supported FTP Server: IIS, ProFTPD, VSFTP
Scan to Fax	Via Fax Server and Fax Service Provider (SMTP)
Scan to Print	Via ScanFront Extended Service
Scan to USB Memory	Supported File System: FAT16 / FAT32
<b>USER AUTHENTICATION</b>	By Device Authentication By Server Authentication: Simple / Active Directory
<b>BUNDLED SOFTWARE</b>	
Software Tools	No software (or additional hardware) required to use ScanFront Administration Tool ScanFront Extended Service ScanFront Software Development Kit (SDK)** Web Application Toolkit (SDK)**
Consumables	Exchange Roller Kit
Suggested Daily Duty Cycle	Approx. 3000 scans/day
* Scanning speeds in Web Application Mode may vary.	
** The software toolkits are available separately. For more information contact your local Canon office or go to the Canon Business Solutions Developer Programme webpage: <a href="http://www.canon-europe.com/bsdp">www.canon-europe.com/bsdp</a>	
Some images are simulated for clarity of reproduction. All data is based on Canon's standard testing methods. This leaflet and the specifications of the product have been developed prior to the date of product launch. Final specifications are subject to change without notice. ™ & ©: All company and/or product names are trademarks and/or registered trademarks of their respective manufacturers in their markets and/or countries.	



Canon Electronics Inc  
canon.com

Canon Europe  
canon-europe.com

English Edition  
© Canon Europa N.V.,  
2013

Canon (UK) Ltd  
Woodhatch, Reigate  
Surrey, RH2 8BF  
Tel: 01737 220000  
Fax: 01737 220022  
canon.co.uk

Canon Ireland  
3006 Lake Drive  
Citywest, Saggart  
Co.Dublin, Ireland  
Tel: 01 2052400  
Fax: 01 2052525  
canon.ie

