



# **N**genuity

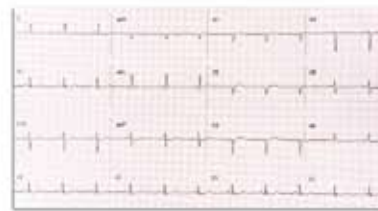
The Smartest Way to Make Paper History.

# The Smartest Way to Scan the Widest Range of Documents

Ngenuity's innovative design packs in smart features that make a big impact in helping you spend less time sorting paper, adjusting scanner settings and worrying about image quality, and more time streamlining your document workflow and boosting your bottom line.



**Fragile and Thin Documents**  
Rice Paper • Airbills • NCR Forms



**Very Long Documents**  
EKG Strips • Oil Well Logs



**Exception Documents**  
Receipts • Folded Documents • Photographs



**Thick and Stiff Documents**  
Stuffed Envelopes • Plastic Cards • Cardstock



**Legal and A4 Size Documents**  
Contracts • Forms • Invoices

**Ngenuity, the next big step in scanning innovation from BÖWE BELL + HOWELL, delivers an unprecedented combination of intelligent paper handling, 40% larger feeder capacity than other scanners in its class and razor-sharp image quality, with the added benefits of a user-friendly interface, easy maintenance and a low cost of consumables. Users across industries can now convert a wider range of documents into high-quality digital images quickly and more efficiently than ever before.**

## **Advanced Document Handling = Improved Workflow Efficiency**

### **Scan a Wider Range of Documents**

Everything from rice paper to plastic cards to stuffed envelopes and cardstock to photos and long EKG strips is fair game for Ngenuity, which scans the widest range of documents of any scanner in its class\*.

With an unlimited daily duty cycle, Ngenuity breezes through documents up to 12.5 inches wide and 200 meters long at speeds that are among the best in its class:

- 150 pages per minute in bitonal, color and grayscale at 200 dpi.

Further, you don't have to sacrifice long-term efficiency for short-term speed. Some components on the scanner have been tested to last for more than 50 million scans.

### **Straight Pass Through Paper Path and Document Modes Add Versatility**

While most documents can make their way easily through the scanner's rotary path, Ngenuity includes an alternative "straight pass through" paper path for exception documents (such as stuffed envelopes and laminated cards) that cannot make the turn on the rotary path.

What's more, special document scanning modes auto-adjust Ngenuity's feeding and transport scanner settings for very long, folded or fragile documents.

### **Auto-Adjustable Feeder Tray Holds 40% More Documents**

Ngenuity's feeder tray holds 700 documents—40% more than other scanners in its class.

The tray also rises and falls—literally—in perfect sync with your batch size thanks to Variable Feeder Tray Capacity control, which remembers your most recent batch size. And since the feeder does not restrict you to manufacturer-set batch size limitations, you can scan almost any size batch you want faster than ever before.

The feeder tray's capacity and innovative technology save you valuable time when loading and switching batches.

## **State-of-the-Art Technologies = Enhanced Image Quality**



### **Next Generation Cameras Deliver Razor Sharp Images**

Armed with top-of-the-line SharpShooter™ Trilinear CCD cameras, Ngenuity delivers 600 dpi optical capture and output.

This advanced camera technology delivers higher OCR, ICR and barcode recognition rates and more reliable forms processing.

### **LED Illumination: Longer-Lasting, No Warm-Up Time**

Ngenuity's LED lights require no warm-up time, meaning the scanner can deliver optimal image quality from the minute you turn it on.

Further, the LED lights last the life of the scanner and provide a more stable level of light than traditional lamps. This translates into more consistent image quality and less time spent calibrating the cameras. In fact, Ngenuity's cameras only need to be calibrated 1-2 times per year.



### **Onboard VirtualReScan® Professional: Image Enhancement at No Cost to Speed**

BÖWE BELL + HOWELL was the first scanner company to implement Onboard VRS, and we still do the best job integrating it into the hardware of the scanner. This way, you can enjoy all the image enhancement and error resolution functionality of VRS without sacrificing speed.

Advanced color management and more precise image cropping are only two of the many features at your fingertips with Onboard VirtualReScan® 4.2 Professional on Ngenuity.

## **Added-Value Functionality = Preferred User Experience**

### **Easy to Install, Use and Maintain**

Ngenuity features a USB 2.0 port and cable to make it easier for you to connect the scanner to the PC. It has a SCSI port as well.

You can access much of the scanner functionality directly through the PC. For example, the User Utility allows you to track the total number of scans and monitor maintenance schedules.

Further, Ngenuity's user-friendly interface with front panel functionality provides easy access to frequently used features and includes two user-customizable function buttons.

Ngenuity is also easy to clean and maintain. The scanner's only consumables, the rollers and tires, are easy to replace, and users can install optional accessories, like the imprinter, easily.

### **Enhanced Ultrasonic Multifeed Detect and Ignore**

BÖWE BELL + HOWELL pioneered the use of Ultrasonic Multifeed Detection technology, and with three independently controlled ultrasonic sensors on Ngenuity, we've raised the bar again.

What's more, the "Multifeed Ignore" setting on Ngenuity now allows you to accept scanned images and continue scanning or alert the scanner in advance to accept an intended multifeed.

The "Ignore by Size" option lets you proactively scan items, such as taped receipts and sticky notes, that the scanner might otherwise identify as a multifeed and stop.

### **True American Ngenuity Offers Top Value**

Designed and manufactured in the U.S.A., Ngenuity's steel paper path and long-lasting parts (including protectively sealed CCD cameras, LED lights that last the life of the scanner and rollers that last for 600,000 scans) ensure that the scanner is able to withstand the many challenges of any hardworking production environment. This means a low overall cost of scanner maintenance and ownership.

What are you waiting for? Ask to see a demonstration of Ngenuity today.



# Ngenuity

Model		9150	9125	9090
Scanning Speed Landscape at Letter Size	Landscape at 200 dpi	150 PPM / 300 IPM	125 PPM / 250 IPM	90 PPM / 180 IPM
Bitonal, Color, Grayscale Simplex / Duplex	Portrait at 200 dpi	120 PPM / 240 IPM	100 PPM / 200 IPM	70 PPM / 140 IPM
Daily Duty Cycle		Unlimited		
Roller Life (bond)		600,000 scans		
Resolution		Output: 600 dpi, Optical: 600 dpi		
Camera Technology		SharpShooter Trilinear 7.6 CCD		
Lighting Technology		White LEDs – instant warm-up; last the life of the scanner		
Image Enhancement		Onboard VRS 4.2 Professional		
Interface		USB 2.0 (cable included); SCSI III		
Supported Drivers (Included)		ImageControls, ISIS, TWAIN through VRS		
Multifeed Detection		Ultrasonic Multifeed featuring: Three sensors, Preemptive Ignore, VRS Ignore, Ignore by Size		
Imprinting		Optional user-installable pre- and / or post-scan imprinter, time and date stamping, 72 characters		
Document Size		1.7 x 2.5 in (43 x 64 mm) to 12.5 x 40 in (318 x 1016 mm)		
Document Size- Long Document Mode		Up to 219 yards (200m)		
Maximum Image Width		12.25 in (311 mm)		
Paper Thickness - Rotary		.0015 - .035 in (0.38 – 0.89 mm)		
Paper Thickness – Straight-Through Paper Path		.0015 - .070 in (0.38 – 1.78 mm)		
Paper Weight		7 to 320 lb bond (30 – 1,200 gsm)		
Feeder Capacity (20 lb bond / 75 gsm paper)		700 documents - Variable Feeder Tray Capacity control		
Scanner Size (HxWxD)**		19.5 x 20.5 x 30 in. ( 49.5 x 52.1 x 76.2 cm)		
Scanner Weight		112 lb (50.8 kg)		
Power Requirement		AC 100-120 V; 220-240V; 50 / 60 Hz		
Power Consumption	Maximum (Scanning)	145 W		
	Minimum (Standby)	50 W		
	Sleep / Energy Star	6.7 W		
Environment	Temperature	50°F to 100°F (10°C to 38°C)		
	Relative Humidity	10% to 80%		
Additional Features		Straight-Through Paper Path, Special Documents Mode, Advanced Color Functionality		
Additional Contents		USB Cable, Installation Resource CD with BBH Scanner User Utility and VRS 4.2 Professional, Power Cord, Starter Cleaning Kit, Camera Calibration Kit		
Additional Options		User-installable Pre- and / or Post-scan Imprinter with Time and Date Stamping, Roller Kit, Cleaning Kit, Power Conditioner		

\*\*Straight paper path door closed

© 2009 BÖWE BELL + HOWELL. All rights reserved. BÖWE BELL + HOWELL and the Böwe Bell + Howell logo are trademarks or registered trademarks of BBH Inc. SharpShooter is a trademark of BÖWE BELL + HOWELL Scanners LLC. All other trademarks and service marks are the property of their respective owners. Specifications are subject to change without notice. \*Comparative statements are based on published specifications of certain other mid- to high-volume production scanners at the time of printing.

Phone: 1.800.SCAN.494 or 1.847.423.3032 (TTY)  
www.bbhscanners.com Form #SD-223 01/09



BÖWE BELL + HOWELL Scanners. Always adding value.