

*ScanSnap*

*ScanSnap S1100i*

**The scanner you take to  
take care of business.**



shaping tomorrow with you

**FUJITSU**

# Upgrade to business class.

## Speedy “One Touch” scanning

The USB powered S1100i can scan a color document in less than 7.5 seconds\*

\*Single-side color A4 document scanned at 300 dpi.

## Generate Microsoft® Word, Excel® and PowerPoint® files

ABBYY FineReader for ScanSnap lets you scan and convert paper documents into Word®, Excel® and PowerPoint® files.

Only Microsoft® Word and Excel® are available for Mac OS. Generated images and text may vary from the original.

## Scans to a greater range of mobile devices

Like all ScanSnap scanners, the S1100i supports wireless scanning to an iOS or Android mobile device via the ScanSnap Connect mobile application\*.



\*Requires compatible PC or Mac computer and a Wi-Fi connection to mobile device. ScanSnap Connect Application is available as a free download from the Apple App Store for iOS and Google Play for Android.

## Intelligent automated features

Like all ScanSnap scanners the S1100i features a powerful set of automated image processing functions including auto color detection, crop & deskew, and blank page removal.

## Scans plastic cards and other various document types\*

In addition to standard paper types, the S1100i can scan plastic cards like driver's license or embossed cards.

\*Card type ISO 7810, ID-1 format = 86 x 54 mm (supports embossed cards)

# ScanSnap S1100i



## Easily synchronize documents to the cloud

S1100i provides users a convenient way to send scanned documents directly to your existing Evernote, Dropbox, Google Docs, SugarSync and Salesforce accounts.\*

## ScanSnap Sync

Quickly and easily synchronize your scanned documents between ScanSnap Organizer on your computer and the ScanSnap Connect App on your mobile device using Dropbox, Google Drive or OneDrive. ScanSnap Sync automatically synchronizes scanned documents between your computer and mobile device, giving you more flexibility to manage your scanned data.

\*Internet connection required. Service fees may apply. \*\*Supported languages: English, Spanish, French, German, Italian, Russian. Supported currency's: USD (United States Dollar), CAD (Canadian Dollar), GBP (Great Britain Pound), EUR (Euro), RUB (Russian ruble), AUD (Australian dollar)

## Scan there! ScanSnap Folder

Scan to virtually any application or web service that can open, insert or attach a PDF or JPEG file from your Windows® computer.



## ScanSnap Receipt™

ScanSnap Receipt allows users to easily scan and extract information from receipts, and export the data into CSV for easy tax filing. ScanSnap Receipt also supports multiple languages and currencies.\*\*



## Organize business cards

Use the included CardMinder software for Mac and PC to scan, store, and edit business card information and export data into applications like Address Book, Excel, and Salesforce.



## New features for quick digitization



### Dual scan

Scan two small sized documents, such as business cards or receipts at the same time. Simply insert documents continuously to reduce your scanning time.

### Automatically stitch together a two-page spread

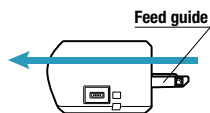
Even charts and diagrams larger than A4 can be scanned. Just fold it in half, scan both sides and the S1100i will automatically stitch it back together.

## Two selectable paper paths

### Straight path

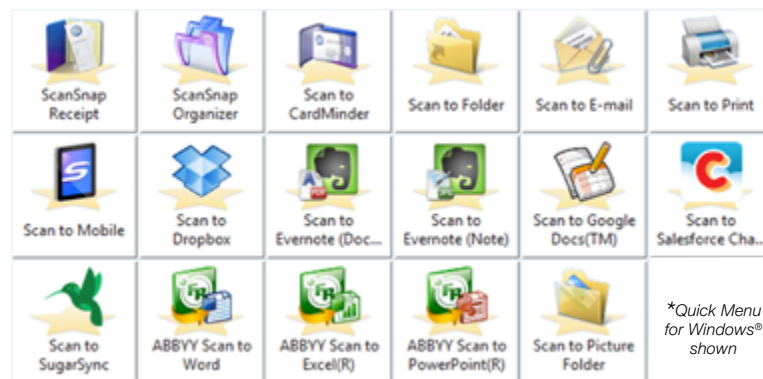
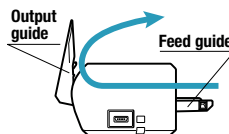
Most suitable for scanning post cards, business cards, plastic cards, and thick stock paper.

\*This applies to standard ISO 7810 ID-1 card types.



### U-turn path

Most suitable for scanning common office paper-work especially in tight or cluttered environment.



## Fast and flexible Quick Menu

The Quick Menu for PC and Mac automatically pops up after scanning to provide you a variety of ways to be immediately productive with your scans. It can be customized to display just your favorites, present a recommendation, and even display custom profiles.

## Continuous Document Feeding (CDF)

The Continuous Document Feeding function allows you to insert pages one after another by detecting when a sheet enters and exits.



Set your document face-up into the S1100i and push the Scan button.



The S1100i proceeds to scan the front side.



The page exits from the top of the scanner when paper path is set to U-turn.



Re-insert the page *without pressing the Scan button* to scan the other side.



After you finish scanning, press the Scan button to save file.



## General Specifications

Description		ScanSnap S1100i		
Scanner type		CDF (Continuous Document Feeding), Simplex sheetfeed two-way paper path (Straight path, U-turn path)		
Scanning modes		Color, grayscale, monochrome, automatic (color / grayscale / monochrome detection)		
Image sensor		CIS (Contact Image Sensor) x 1		
Light source		3 Color LED (Red / Green / Blue)		
Optical resolution		600 dpi		
Scanning speed (A4 portrait) *1	USB bus powered	Auto mode (default) *2	7.5 seconds / page	
		Normal mode (150 dpi)		
		Better mode (200 dpi)		
		Best mode (300 dpi)		
		Excellent mode (600 dpi)		35 seconds / page
Document size	Normal mode	A4, A5, A6, B5, B6, Business card, Post card, Letter, Legal and Custom sizes (Max: 216 x 360 mm (8.5 x 14.17 in.), Min: 25.4 x 25.4 mm (1 x 1 in.)) / Automatically recognizes document size		
		Normal mode with Carrier Sheet	Use of a carrier sheet permits the scanning of A3, B4, 11 x 17 in. and photographs as well as the document sizes that are listed above	
			Long paper scanning *3	Max: 216 x 863 mm (8.5 x 34 in.) (300 dpi or less)
Paper weight (Thickness)		<ul style="list-style-type: none"> <li>● 52 to 209 g/m<sup>2</sup>, or 14 to 56 lb (Straight path)</li> <li>● 52 to 80 g/m<sup>2</sup>, or 14 to 20 lb (U-turn path)</li> <li>● Card</li> </ul> Portrait or Landscape (Straight Path) Non-embossed: 0.76 mm or less Embossed: 0.76 + 0.48 mm (ISO7810 Conforming)		
Paper setting		Front side up		
Interface *4		USB 2.0 (USB 1.1 compatible)		
Power requirement		5 V / 0.5 A ( x 1port)		
Power consumption		During operation: 2.5 W or less During sleep mode: 1W or less During Standby (OFF) mode: Less than 0.5 W		
Operation environment		Temperature: 5 to 35° C (41 to 95° F) Relative humidity: 20 to 80% (Non-condensing)		
Dimensions (W x D x H) *5		273 x 47.5 x 34 mm (10.74 x 1.87 x 1.33 in.)		
Device weight		350 g (0.77 lb)		
Environmental compliance		ENERGY STAR® / RoHS		
Multifeed detection		None		
Driver		ScanSnap specific driver ● Windows®: Does not support TWAIN / ISIS™ ● Mac OS: Does not support TWAIN		

\*1 Scanning speeds may vary due to the system environment used. Scanning speed means the time from "Start feeding document" to "Finish output document" after pre-pick and pushing Scan button. In case of "From pushing Scan button", Warm-up time is added. ● Warm-up time: Less than 2 seconds from ready status (Less than 3 seconds after opening chute cover) \*2 Documents measuring approximately 148 mm in length or less are scanned in "Best mode", while other documents are scanned in "Better mode". \*3 The S1100i is capable of scanning documents that exceed A4 size in length. This function is available for all modes except "Excellent mode". \*4 Computer with USB 3.0 will work as USB 2.0 guaranteed only with USB cable provided with product. \*5 When the paper output guide is in the folded position.

## Software

	Windows®	Mac OS
Driver *1	ScanSnap Manager	ScanSnap Manager
Applications	ScanSnap Organizer	ScanSnap Organizer
	ScanSnap Receipt	ScanSnap Receipt
	CardMinder	CardMinder
	ABBYY FineReader for ScanSnap™	ABBYY FineReader for ScanSnap™
	Scan to Microsoft® SharePoint®	-

\*1 TWAIN or ISIS™ applications cannot be used directly.

## Included items

● Safety Precautions	● Setup DVD-ROM	● USB cable
----------------------	-----------------	-------------

## Consumables

Description	Part number	Remarks
Cleaner F1	PA03950-0352	100 ml bottle Used to clean rollers
Cleaning Wipe	PA03950-0419	1 pack (24 packets) Used to clean rollers

This scanner is designed to digitize materials that can be reproduced lawfully, in accordance with applicable copyright regulations and other laws. ScanSnap users are responsible for how they use this scanner. It is imperative that ScanSnap users comply with all applicable local rules and laws, including, without limitation, copyright laws when using this scanner.

\*ABBYY and FineReader are trademarks of ABBYY Software, Ltd. which may be registered in some jurisdictions. ABBYY™ FineReader™ Engine ©ABBYY. OCR by ABBYY \*Evernote is a registered trademark or trademark of Evernote Corporation. \*Google, Google Drive, Android and Google Play are registered trademarks or trademarks of Google Inc. \*Intel, Pentium, and Intel Core are registered trademarks or trademarks of Intel Corporation in the United States and other countries. \*ISIS™ is a registered trademark of EMC Corporation in the United States. \*Mac, Mac OS, OS X, iPad, iPhone and App Store are trademarks of Apple Inc. \*Microsoft, Windows, Windows Vista, Excel, PowerPoint, SharePoint, Internet Explorer and OneDrive are either registered trademarks or trademarks of Microsoft Corporation in the United States and/or other countries. \*Word is the product of Microsoft Corporation in the United States. \*Salesforce and Salesforce CRM are registered trademarks or trademarks of salesforce.com, inc. in the United States and other countries. \*ScanSnap, ScanSnap logo, ScanSnap Manager, ScanSnap Organizer and CardMinder are registered trademarks or trademarks of PFU LIMITED in Japan. \*Wi-Fi and Wi-Fi Protected Setup are trademarks of Wi-Fi Alliance. \*Other company names and product names are the registered trademarks or trademarks of the respective companies.

## ScanSnap S1100i System Requirements

### Windows®

Compatible operating systems		Windows® 10 (32-bit / 64-bit) *1	Windows® 8.1/8 (32-bit / 64-bit) *1	Windows® 7 (32-bit / 64-bit)	Windows Vista® (32-bit / 64-bit) SP2 or later
Driver / Applications *2	ScanSnap Manager	Supported	Supported	Supported	Supported
	ScanSnap Organizer	Supported	Supported	Supported	Supported
	ScanSnap Receipt *10	Supported	Supported	Supported	Supported
	CardMinder	Supported	Supported	Supported	Supported
	ABBYY FineReader for ScanSnap™		*3	Supported	Supported
Scan to Microsoft® SharePoint®			Supported	Supported	Supported
Hardware requirements *4	CPU *5	Intel® Core™ i5 2.5 GHz or higher			
	Memory capacity *5	4 GB or more			
	Display	1,024 x 768 pixels or higher	800 x 600 pixels or higher		
	Disk capacity *6	3.5 GB or more of free hard disk space			
	DVD-ROM drive	Required for installation *7			
USB port *5 *8	USB3.0 *9 / USB2.0 / USB1.1				

\*1 Operate as a desktop application. \*2 Please refer to the ScanSnap website for latest support information. \*3 After confirming each company's policies, we will update support status for each application on PFU website. \*4 The ScanSnap device may not work if the connected computer does not meet these requirements. \*5 Scanning speeds may drop if recommended CPU, memory capacity and USB 1.1 requirements are not met. \*6 Microsoft .NET Framework 3.5 SP1 will be installed (requires 500 MB of disk space) together with ScanSnap Manager, ScanSnap Organizer or CardMinder for systems that do not have .NET Framework 3.5 SP1 installed. When using "Scan to Google Drive" with ScanSnap Manager/ScanSnap Organizer, users also need to install either .NET Framework 4 or in-place updates of .NET Framework 4. \*7 If you have no DVD-ROM drive, please visit the following website: <http://scansnap.fujitsu.com/g-support/en/> \*8 ScanSnap operates on both USB 2.0 and USB 3.0 without any difference in performance. \*9 Some computers do not recognize the ScanSnap when it is connected to a USB 3.0 port. In this case, please use a USB 2.0 port. \*10 Available via ScanSnap online update. \* System requirements may change depending on the duration of support and the support policy of the companies that make the software listed in the table above.

### Mac OS

Compatible operating systems		OS X v10.10	OS X v10.9 (Recommended: v10.9.5 or later)	OS X v10.8 (Recommended: v10.8.5 or later)	OS X v10.7 (Recommended: v10.7.5 or later)
Driver / Applications *1	ScanSnap Manager	Supported	Supported	Supported	Supported
	ScanSnap Organizer	Supported	Supported	Supported	Supported
	ScanSnap Receipt *7	Supported	Supported	Supported	Supported
	CardMinder	Supported	Supported	Supported	Supported
	ABBYY FineReader for ScanSnap™	Supported	Supported	Supported	Supported
Hardware requirements *2	CPU *3	Intel® Core™ i5 2.5 GHz or higher			
	Memory capacity *3	4 GB or more			
	Display	1,024 x 768 pixels or higher			
	Disk capacity	2.5 GB or more of free hard disk space			
	DVD-ROM drive	Required for installation *4			
USB port *3 *5	USB3.0 *6 / USB2.0 / USB1.1				

\*1 Please refer to the ScanSnap website for latest support information. \*2 The ScanSnap device may not work if the connected computer does not meet these requirements. \*3 Scanning speeds may drop if recommended CPU, memory capacity and USB 1.1 requirements are not met. \*4 If you have no DVD-ROM drive, please visit the following website: <http://scansnap.fujitsu.com/g-support/en/> \*5 ScanSnap operates on both USB 2.0 and USB 3.0 without any difference in performance. \*6 Some computers do not recognize the ScanSnap when it is connected to a USB 3.0 port. In this case, please use a USB 2.0 port. \*7 Available via ScanSnap online update. \* System requirements may change depending on the duration of support and the support policy of the companies that make the software listed in the table above.

## Options

Description	Part number	Remarks
ScanSnap S1100 Case *1	PA03610-0001	Intended for ScanSnap S1100i and included items
ScanSnap Carrier Sheets *2	PA03360-0013	5 Carrier Sheets Intended for ScanSnap iX500, iX100, S1500, S1500M, S1100i, S1100

\*1 This product has been especially designed for storing and carrying ScanSnap S1100i. Please note that this product is not guaranteed to withstand damage by excessive shock or external pressure. \*2 Although ScanSnap Carrier Sheets have a listed lifespan of 500 scans, the lifespan may vary with usage. ScanSnap Carrier sheets are intended to scan paper documents with weights of 127 g/m<sup>2</sup> or less. They also support the scanning of folded documents that are as large as 216 x 297 mm.



## Fujitsu Computer Products of America, Inc.

1250 East Arques Avenue, Sunnyvale, CA 94085-4701  
 Tech Support: (800) 626-4686, Sales: (888)425-8228  
 info@fcpa.fujitsu.com • <http://us.fujitsu.com/fcpa>

**POWERED BY**

**ABBYY**  
FineReader  
OCR

**FineReader**  
OCR

ABBYY™ FineReader™ Engine ©ABBYY. OCR by ABBYY  
 ABBYY and FineReader are trademarks of ABBYY.

PFU LIMITED, a Fujitsu company, has determined that this product meets the ENERGY STAR® guidelines for energy efficiency. ENERGY STAR® is a registered trademark of the United States.

Visit the ScanSnap website for additional information : <http://scansnap.fujitsu.com/>

### ⚠ Safety Precautions

Be sure to carefully read all safety precautions prior to using this product and use this device as instructed.	Do not place this device in wet or oily areas; or subject it to environments high in dust or moisture. Doing so may result in electrical shock, fire, or product damage.
---	--

Specifications are subject to change without notice.